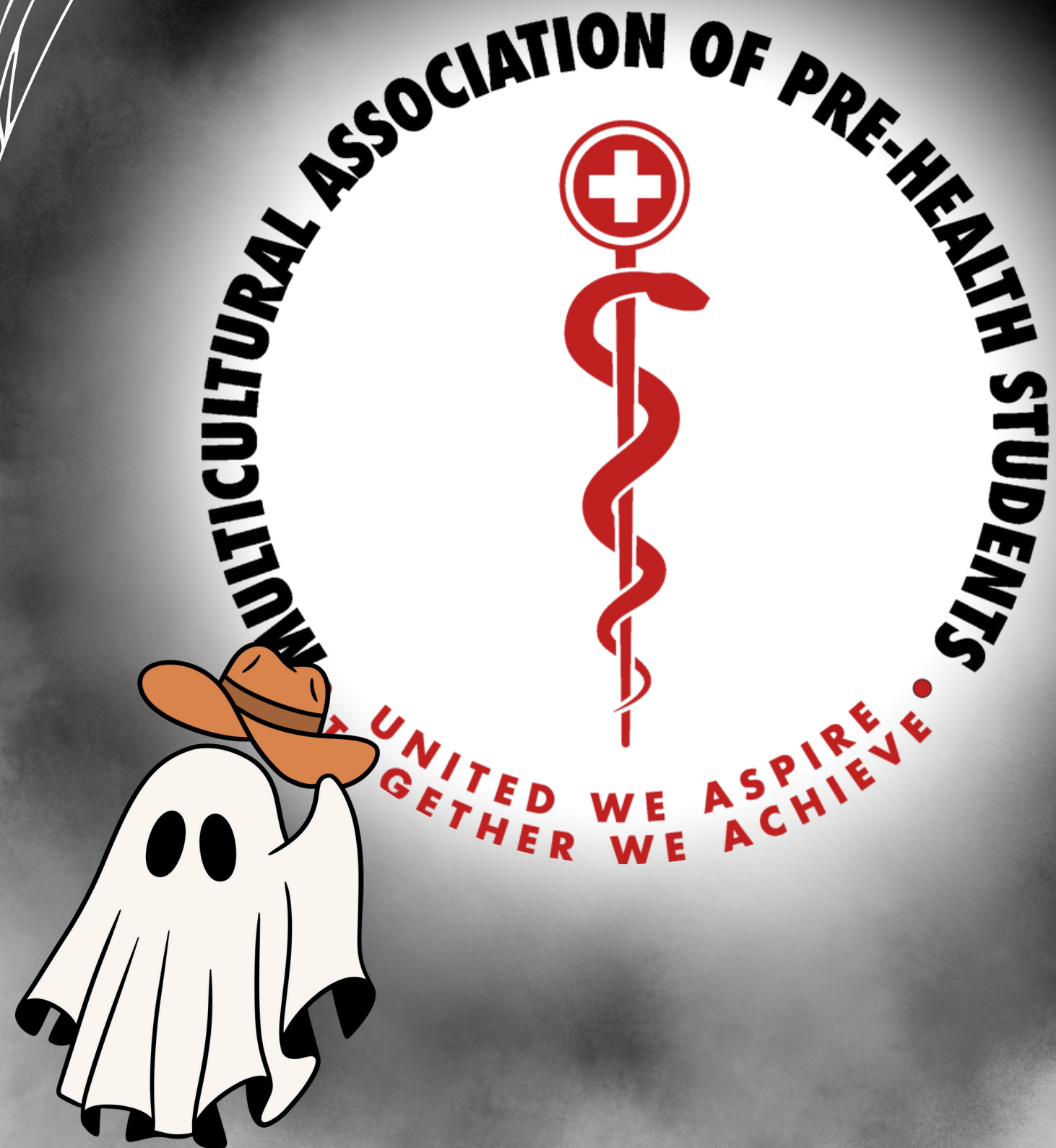


4TH FALL GENERAL BODY MEETING

Wednesday, October 25th, 2023



FIND US ON:



@mapsucf

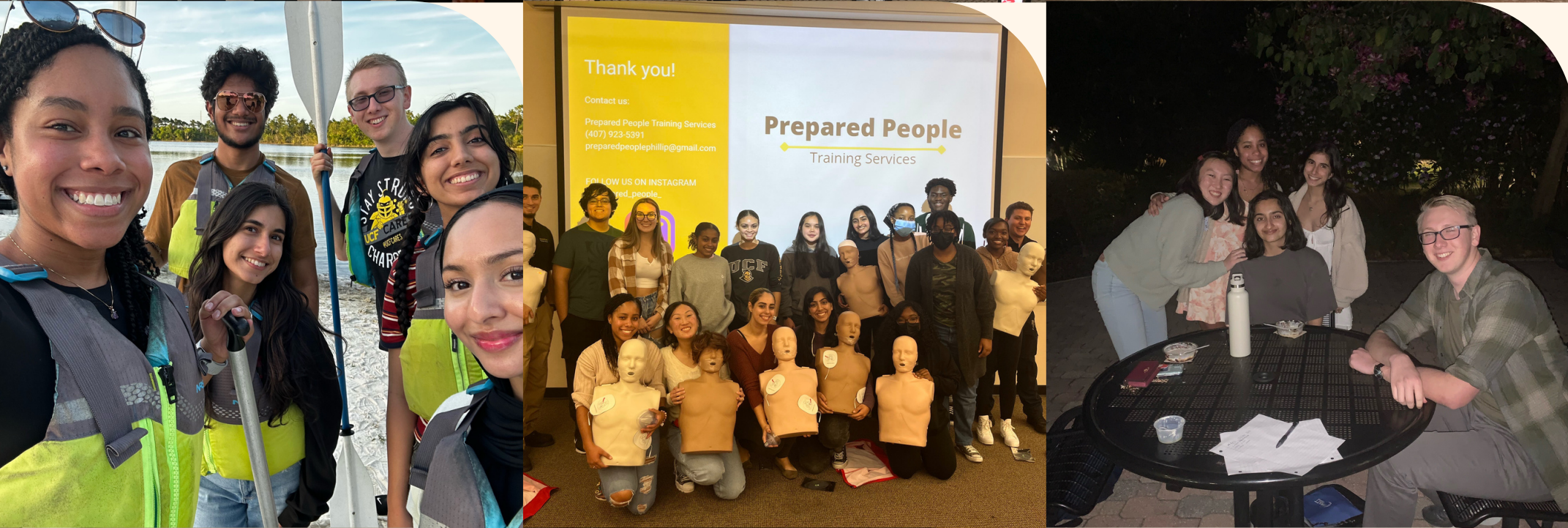


mapsatucf.org



WHO WE ARE AS A CLUB:

- Our pre-health club is dedicated to promoting diversity in the medical field and empowering our members to succeed in their pre-health goals by providing a variety of resources that help them become competitive applicants. We strive to foster a strong sense of community and support amongst our members, with the ultimate goal of helping each individual achieve their career aspirations.





**PLEASE SCAN THIS QR CODE TO
SIGN IN:**



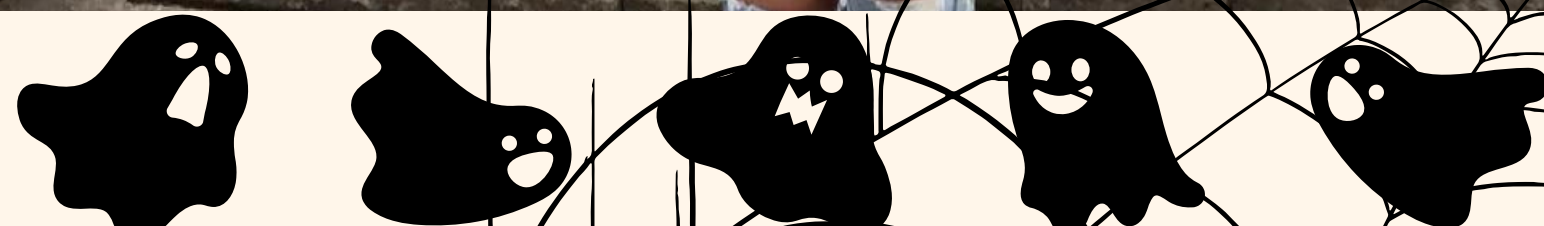
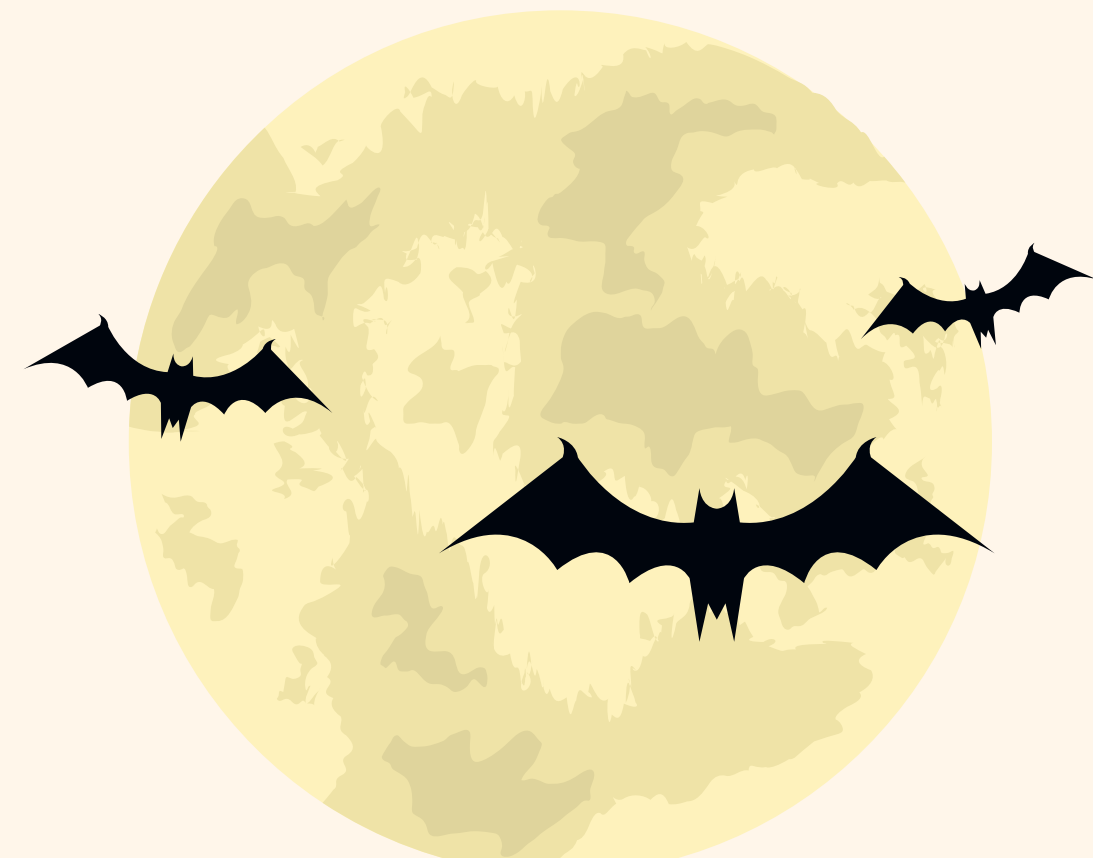
MEET THE TEAM





MEET OUR PRESIDENT: MADDISON WILLIAMS

Spooky Fun Fact: The human body consists of organs in a singular count and pairs. However, the organs that are present in pairs, you only need one to survive!



MADDIE'S UPCOMING EVENTS:

- **Mentor-Mentee Game Knight Social**
 - **Wednesday November 1st**
 - **6-7pm**
 - **VAB Room 111**
- **Friendsgiving Potluck w/KRMR**
 - **Wednesday November 15th**
 - **VAB Room 111**
- **MAPS Annual Gingerbread Decorating Competition**
 - **Wednesday November 29th**
 - **7-8pm**
 - **Room TBA**



BOOO!





MEET OUR V.P. OF OPERATIONS: JAEHYUN AHN

**Spooky Fun Fact: The stomach acid
composed in your stomach is so strong
that it can dissolve metal and even burn
your skin!**



JAEHYUN'S UPCOMING EVENTS:

- **MSAS Workshop #2**
 - **November 13th**
- **Study Knights**
 - **November 9th (6 to 8 PM) Room TBA**
 - **November 30th (6 to 8 PM) Room TBA**
- **How to Study for Chemistry Courses Workshops**
 - **TBA**



MEET OUR V.P. OF COMMUNICATIONS: SHRIYA DORANALA

**Spooky Fun Fact: Your heart beats
100,000 times per day!**



SHRIYA'S UPCOMING EVENTS:

- **Halloween Party on 10/26**
 - 8:30- 9:30 pm
 - MSB 359
 - Costumes are encouraged!
- **Lake Claire Kayaking Social**
 - 11/17 from 4-6
 - Kayaking and games!





MEET OUR SECRETARY: JORDAN MCINTYRE

**Spooky Fun Fact: 25% of the bones
in your body are in your feet and
another 25% of them are in your
hands!**



MAPS POINT SYSTEM

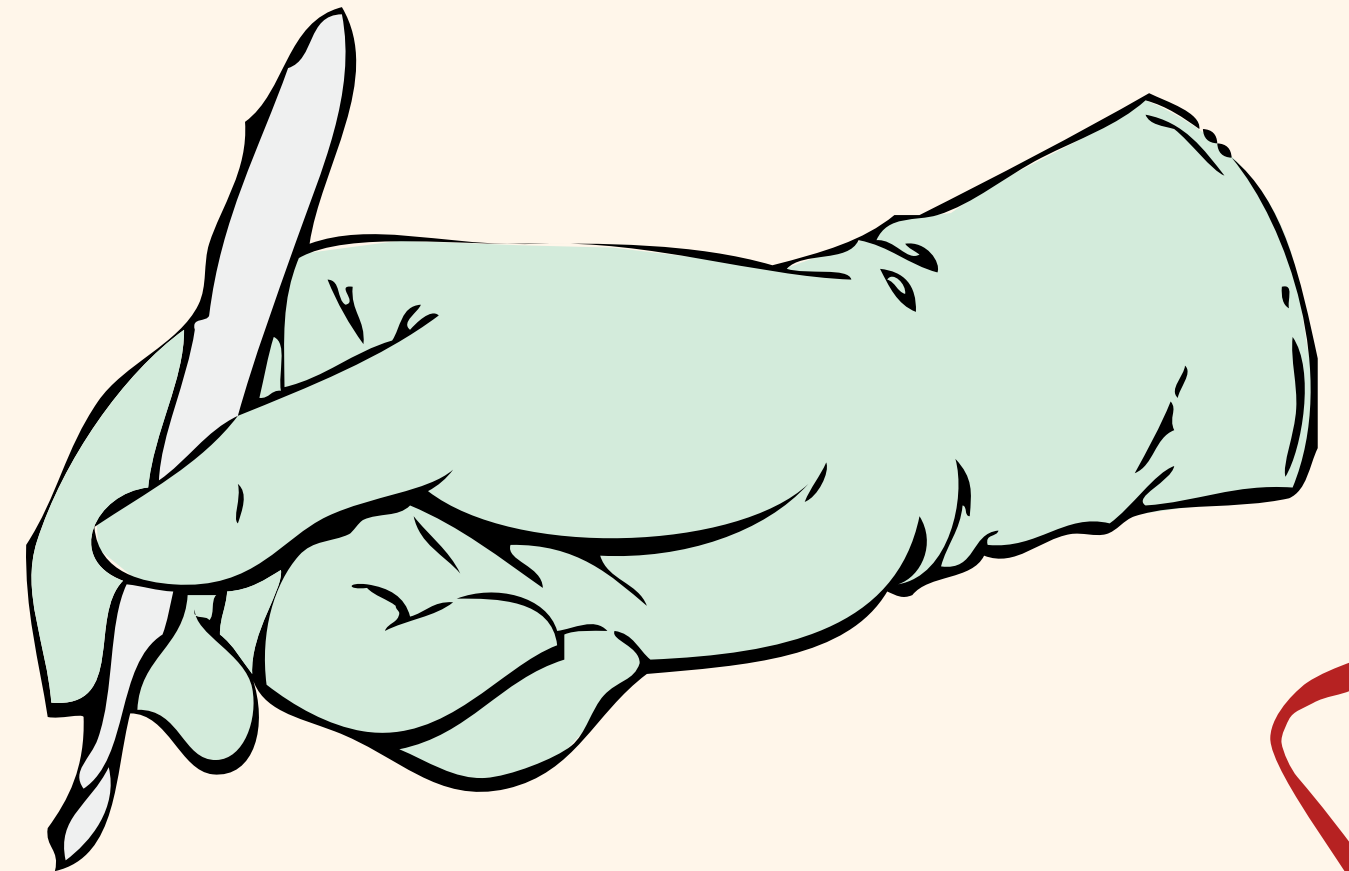
OVERVIEW:

- **GBMS**
 - **5 Points**
- **Academic/Health Events**
 - **4 Points**
- **Social Events**
 - **3 Points**
- **Fundraising Events**
 - **5 Points**
- **Volunteering Events**
 - **5 Points**

The full points system as well as an active tally of points can be found on our website under the Members tab.

SURGICAL INTERNSHIP

This is a semester-long internship at Advent Health Winter Park. Interns earn 150-200 shadowing hours on average (About the amount medical schools are looking for to consider your application)!



SURGICAL INTERNSHIP



←--
Information/Requirements

Application

-->
This is due on Oct. 31st!!!

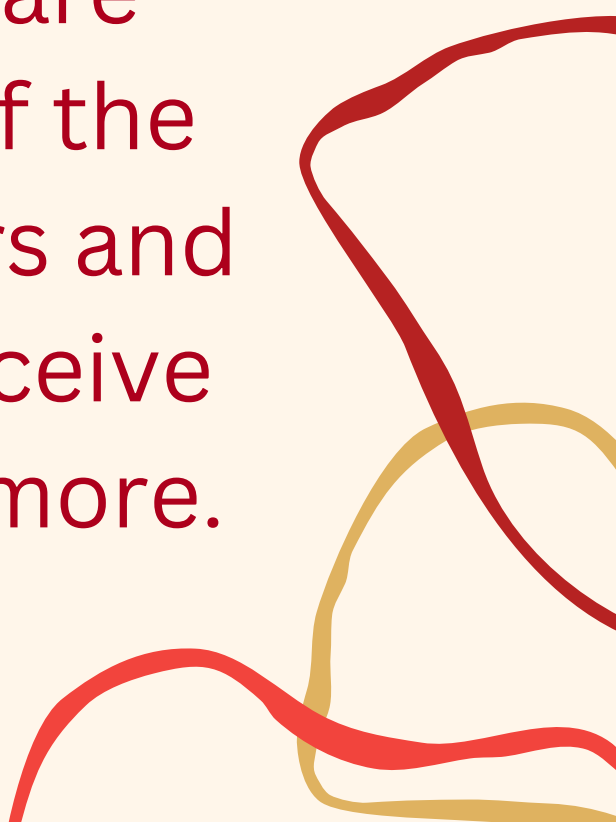




ADVENT HEALTH TRANSPORTER

We have been offered an opportunity for members to apply to either volunteer or work part time as patient transporters at Advent Health Facilities!

Patient transportation, also called patient transport, is the process of moving patients to and from different areas of a medical facility. Sometimes patients are not permitted or are physically unable to walk from their rooms to other areas of the hospital. In these cases, patient transporters use wheelchairs and stretchers to help move patients safely to other areas to receive treatment, take tests, recover from recent procedures, and more.



ADVENT HEALTH TRANSPORTER

The role of a patient transporter includes the following:

- Assisting patients in and out of cars, taxis, and other vehicles.
- Carefully lifting patients from their beds and placing them into wheelchairs or moveable beds.
- Moving patients to different areas of the hospital, such as operating rooms, treatment areas, and special service departments.
- Transporting supplies, laboratory specimens, and equipment to designated areas of the medical facility.
- Transporting deceased patients to the appropriate area, such as the mortuary.
- Providing patients and their families with compassion and care. Demonstrating cultural and social tolerance and acceptance is crucial.
- Following protocol to maintain a safe and healthy work environment for fellow associates and patients.
- Having a willingness to expand their knowledge and training through continued education.

ADVENT HEALTH TRANSPORTER



Please reach out to my email for more information and a contact for this opportunity!

**Secretary email:
maps.secretaryucf@gmail.com**

HEART WALK @ UCF

- November 4th, Time: 8am (Walk starts at 9am)
- The American Heart Association is hosting its annual Heart Walk at UCF!
- Sign up to walk with the Innovation Unit from Advent Health Celebration (No donation required)
- This will be a fantastic opportunity to get involved in the community and to network with healthcare workers of all backgrounds and cultures!!!



I WALK
TO SAVE LIVES



American
Heart
Association.

THE CHECKUP

Sign up for our Newsletter Directors' latest edition of the MAPS Checkup! Access your membership perk of the monthly newsletter and earn 2 points!





MEET OUR TREASURER: EZINNE OKONKWO

**Spooky Fun Fact: On average, sneeze droplets travel up to ~100 mph.
That's pretty fast!**



EZINNE'S UPCOMING EVENTS:

- **Breast Cancer Tabling Fundraiser (Friday)**
- **UCF vs. WV Football Volunteering**
 - **October 28th at 8:30 am**
 - **7-8 hr shift**

Phleb Certificate Course

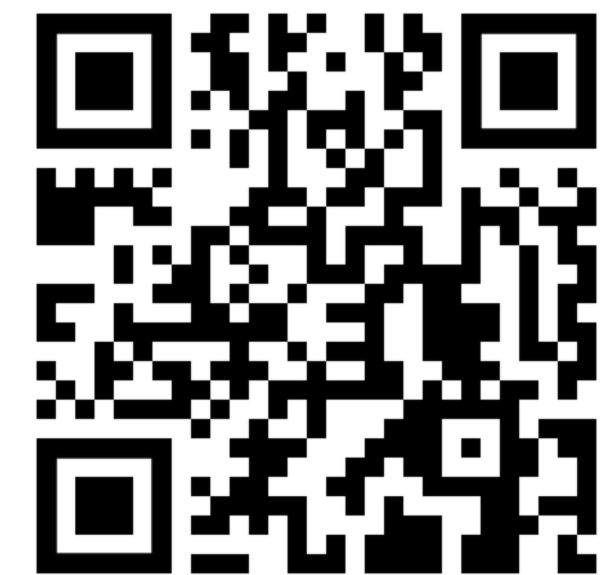
- **November 5th, 9 am - 5pm**
- **Cost: \$140 (includes workbook)**
- **HSI 116, 9 am - 5 pm**
- **Blaze Partial Proceeds**
 - **November 9 (tentative)**



FOOTBALL SIGN-UP



Phleb Certificate Course RSVP



MEET OUR SERGEANT- AT-ARMS: FARAH IRANI

Spooky Fun Fact:

One of my organs are missing!



FARAH'S UPCOMING EVENTS:

- **Cards for Care Donations**
 - November 8th (after GBM) from 6:30-7:30pm
 - Cards made will be donated to children and families at Arnold Palmer Children's Hospital
 - Every two cards made = 1 volunteer hour!
- **Second Harvest Food Bank**
 - Date and Time TBD
- **Jeremiah's Partial Proceeds (All day)**
 - November 8th (after Cards for Care)
 - Waterford Lakes location



~Scan me~



TRIVIA TIME

